

2019 Bituminous Street Improvements St. Joseph, Minnesota



STJOE 147693

Project Update

Project Contacts

General Contractor

Knife River Corp.

Project Manager

Andy Hicks

andy.hicks@kniferiver.com

763-286-0678

Project Superintendent

Todd Puhalla

320.248-1508

Subcontractors

Sewer & Water Main

C&L Excavating

Kevin Cox

320.363.1221

Traffic Control

All State

Manny Kissner

320.685.9911

Concrete Flatwork

West Star Curb

Dean

320.764.9582

Turf Establishment

North Star Landscaping

Sean Grefe

320.597.2500

Grading

Craig Bardson Excavating

Ben Bardson

320.845.4952

City Engineer

Randy Sabart, PE

320.229.4348

rsabart@sehinc.com

SEH Construction Observer

Jerry Siegfried

320.980.4107

jsiegfried@sehinc.com

August 2019 | Project Update No. 1

Hello and welcome to the *2019 Bituminous Street Improvements Project Update*. In this and upcoming issues of the Update, we will be updating you on the project status.

The project team consists of the City of St. Joseph, SEH, and Knife River Corp. SEH is the municipal engineering firm that serves as the City Engineer for the City of St. Joseph and will serve as the contact between contractors and residents.

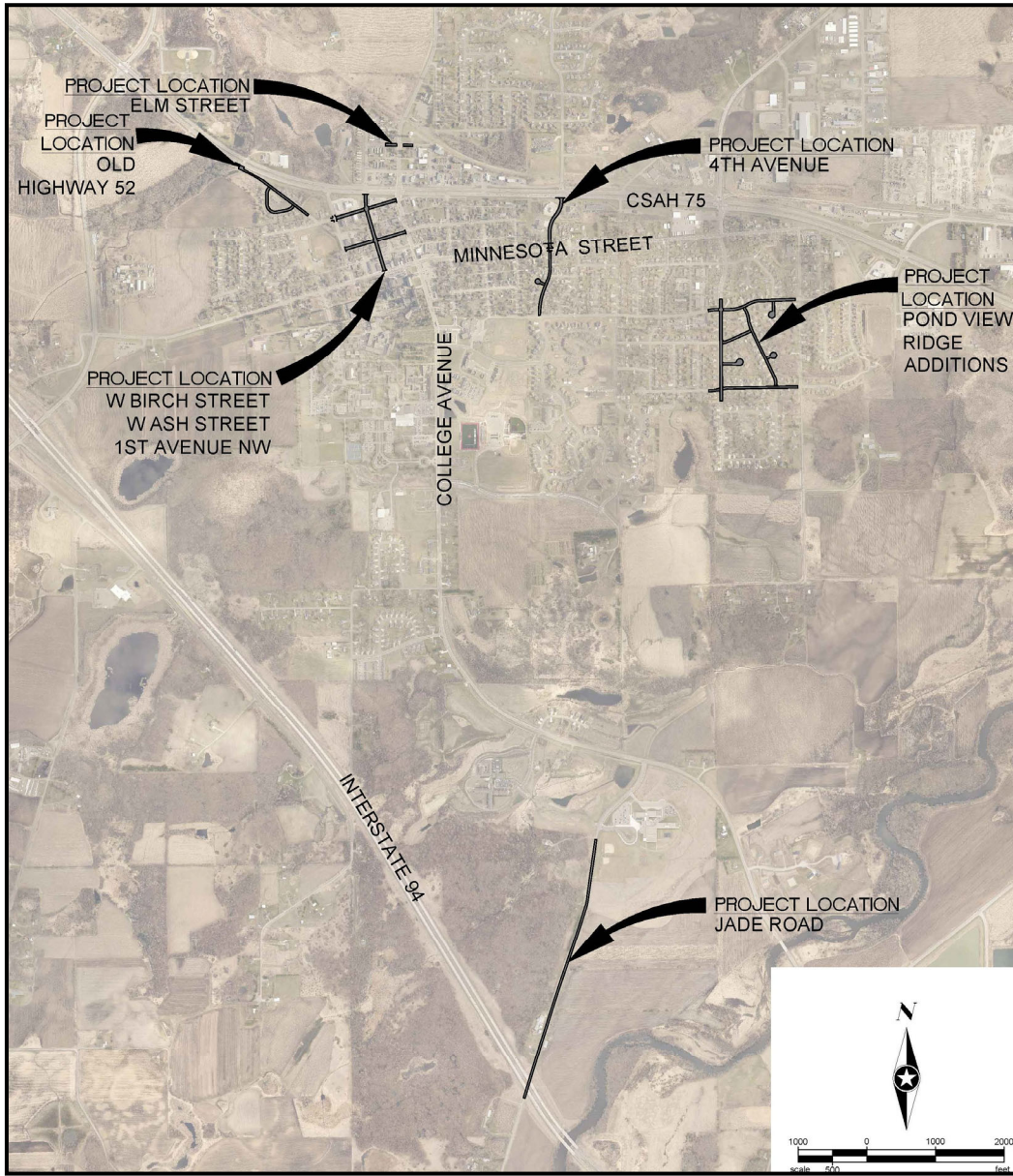
We hope to provide answers to your questions and concerns in a timely manner. However, when more than one team member needs to be consulted, it may take a little longer to provide you with accurate and up-to-date information.

Jerry Siegfried, SEH Project Representative, will be on-site during construction to observe project progress and the Contractor's work. Jerry is the fastest link to problem solving because he communicates directly with everyone on the construction team. Do not hesitate to contact Jerry with any questions you may have. Jerry will be driving a blue Chevy Silverado. If you are unable to reach Jerry in the field, please contact Bill Zidon at the SEH Office at 320.229.4309 or Randy Sabart at 320.229.4348.

Project Status

The City awarded the construction contract for the project to Knife River Corp. from Sauk Rapids, Minnesota. Knife River Corp. is the General Contractor and will be responsible for constructing the street improvements throughout the project.

The Contractor anticipates beginning work the week of September 2nd, and we anticipate construction to last until early November. Initial construction will include equipment mobilization, traffic control set-up, and erosion control set-up. The Contractor will begin work on Old Highway 52 and Cypress Drive with removals, reclamation (pulverizing), and excavation for sanitary sewer, then continue to other areas of the project. This process is anticipated to take approximately 2 weeks. The utility construction on Old Highway 52, Cypress Drive, and Elm Street are anticipated to be completed by the end of September. The concrete flatwork and bituminous paving throughout the project is planned to begin the week of October 7th and continue for two weeks. The final bituminous wearing layer will be paved in 2020 on Old Highway 52, Cypress Drive, and Elm Street. See below for a map of the project location.



Description of Project

The street reconstruction portion of the project consists of reclaiming (pulverizing) the existing street pavement, excavating (salvaging) the pulverized materials, excavating a portion of the existing road base, and then finally constructing new layers of (salvaged) gravel and bituminous pavement. This method of construction will take place on Old Highway 52, Cypress Drive, Elm Street, E Baker Street, the north portion of 12th Avenue SE, 13th Avenue SE, the north portion of Pondview Lane E, and the east portion of Callaway Street.

The street resurfacing portion of the project consists of milling the outside 6 feet of the existing pavement about 1-inch deep and constructing a new 1.5-inch thick layer of bituminous pavement on 1st Avenue NW, W Birch Street, W Ash Street, 4th Avenue SE, Western Court, 12th Avenue SE, Callaway Street, Pondview Lane, Cary Court, Cedar Court, and Dale Street. There will also be some spot pavement reconstruction areas and some spot curb replacements in these areas.

4th Avenue NE will be resurfaced by removing (milling) the full thickness of the existing pavement surface and paving two new layers of bituminous pavement on the existing aggregate base.

Jade Road will be reconstructed by reclaiming (pulverizing) the existing street pavement. The reclaimed material will then be compacted in place and two new layers of bituminous pavement will be paved. The process will allow the City to increase the structural load capacity of the street pavement.

Pedestrian access ramps (where they presently exist) will also be reconstructed within the project limits. The ramps will be brought into compliance with the Americans with Disabilities Act (ADA).

What's the Contractor Going to Do?

Municipal utility improvements are often preceded by the relocation and construction of private utilities such as telephone, cable television, electricity, and gas. Relocation of private utilities is often necessary to minimize construction conflicts with the municipal storm sewer, water main, or sanitary sewer. The City's Contractor does not direct the construction operations for these private utilities.

Municipal utility construction will begin with removal of existing pavement surface. Once the removals are completed, the Contractor will then begin the construction of the sanitary sewer or water main in the areas planned for utility reconstruction which includes digging trenches and installing pipe and manholes. After installing the sanitary sewer or water main, the Contractor will then rebuild the road and complete restoration of any turf disturbed by construction.

Private Parking Lot and Private Driveway Reconstruction

Property owners may replace their parking lot/driveway pavements in conjunction with the overall City project. Property owners may contact the general contractor (contact information listed on front page) for proposals for private driveway or parking lot reconstruction. If you proceed with parking lot/driveway replacement, we ask that you alert our project representative, Jerry Siegfried, so proper coordination of the City's contractors can occur. Please note, there is no obligation on the City's contractor to perform any private reconstruction.

Preservation of Construction Stakes and Utility Flags. . . . We need your help!

Please do not remove any of the wooden stakes you will see temporarily placed throughout the project. These stakes are used by the Contractor to construct the project and are expensive to replace.

Please do not remove or relocate the colored utility location flags. These flags, in conjunction with the spray paint markings on the ground, are necessary for the Contractor to locate buried utilities such as gas and electricity. We understand these flags may be unsightly and difficult to mow around, but we need your help to protect the construction crews and the residents in your neighborhood.

Existing Landscaping

Obstacles such as sprinkler systems or pet containment systems should be removed by the property owner to protect them from damage by construction operations.

There are times, however, when trees, fences, landscaping items, and other obstacles must be removed for safety reasons. This situation occurs when obstacles are close to the edge of the utility trench and there is a risk of the obstacle falling into the trench or injuring workers. The Contractor will work to save trees whenever possible.

If you are trying to decide if you should move something out of the right-of-way, it may help to observe the construction. In many cases, your question is best answered visually as construction activities approach your property. Pay particular attention to the location of the utility trench, stockpiles, materials and the heavy equipment. **Remember, the Contractor will permanently remove any obstacles within the public right-of-way that interfere with construction, and they will not reinstall these items.** If you have questions, please call the SEH Construction Observer.



Construction Site Safety

There will be some deep utility trench construction and, of course, heavy machinery operating on the construction site. Heavy equipment and construction in progress can be strong attractions to everyone, especially children. Warn your children not to play near machinery and construction material storage areas. Your help in keeping children and other bystanders away from the construction area will ensure that the project will progress smoothly!

Special Events

If you are planning a special event, such as a family reunion or have commercial deliveries, please notify the SEH Construction Observer. Please provide as much advance notice of the event as possible, ideally a week. We will forward your information to the Contractor in an effort to accommodate your access needs as best as possible.

Construction Zone

Barricades, road closure signs, and detour signs may be installed throughout the project area to protect motorists during construction. Please pay careful attention to the warning signs! **"Road Closed"** signs are used where the roadway is impassable and closed to all traffic except for the Contractor's equipment or authorized vehicles.

"Road Closed to Thru Traffic" signs are used where through traffic must detour to avoid a closure some distance beyond the sign, but where local traffic can move up to the point of closure. In this instance, local traffic would be defined as the residential traffic from the particular street under construction.

There will also be times during construction that direct access to your driveway will be limited. Access to your property is important to us. The Contractor will work to minimize those times that access must be limited.

As the Contractor's operations move during the course of construction, signs, barricades, and detours must be relocated as appropriate. We understand this may be frustrating! **Please allow extra time in your schedule as you drive through the construction zone or posted detours.** Please advise your family and guests to exercise caution and observe safe driving speeds. Be sure workers and heavy equipment operators see you before you drive around them. The St. Joseph Police Department may be contacted in an effort to increase enforcement of the statutory speeds and construction zone traffic control.

Short Elliott Hendrickson Inc.
1200 25th Avenue South
P.O. Box 1717
St. Cloud, MN 56302-1717



Project Update

2019 Bituminous Street Improvements
St. Joseph, Minnesota